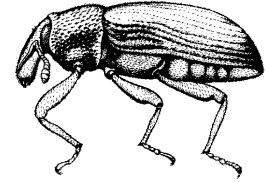


RUTGERS
New Jersey Agricultural
Experiment Station



POSTDOCTORAL ASSOCIATE IN ENTOMOLOGY IPM of Turfgrass Insects

Job Description: Conduct laboratory, greenhouse, and field studies on IPM of the Annual Bluegrass Weevil (ABW) and the white grub complex in turfgrass. Postdoc will work closely with PI and other members of program on ongoing and new projects. Ongoing projects involve pest biology, biological / microbial control, biological control of a turfgrass weed, insecticide resistance and its management. Development of new projects related to turfgrass insects is also possible. Grant proposal development and some extension activities are expected.

Qualifications: Ph.D. in entomology or closely related areas. Outstanding candidates with experience in entomology fieldwork, insect pathogen ecology and application, and/or turfgrass entomology are encouraged to apply.

Salary: \$52,000-56,000 (commensurate with experience). Yearly automatic raises. Additional raises possible with outstanding performance.

Time Frame: 1-year appointments beginning ideally as soon as possible with option for renewal up to 3 years with satisfactory progress.

Location: Department of Entomology, Rutgers University, New Brunswick, NJ.

Contact: Dr. Albrecht Koppenhöfer (a.koppenhofer@rutgers.edu). For details on the department and Dr. Koppenhöfer's program see <https://entomology.rutgers.edu/>.

Application: Candidates need to email Dr. Koppenhöfer an application letter, a CV, and the contact information for 3 professional references.

Rutgers University is an equal access/equal opportunity/affirmative action employer.*

Some related links:

Rutgers University: <https://www.rutgers.edu/>

Rutgers University, New Brunswick: <http://nb.rutgers.edu/>

Rutgers School of Environmental and Biological Sciences: <http://sebs.rutgers.edu/>

Rutgers Center for Turfgrass Science. <http://turf.rutgers.edu/>

New Brunswick: <http://www.newbrunswick.com/>

http://en.wikipedia.org/wiki/New_Brunswick,_New_Jersey

New Jersey: http://en.wikipedia.org/wiki/New_Jersey

In addition to being one of the best places in the world to conduct turfgrass research, Rutgers is situated in the middle of one of the most culturally rich and diverse and historical areas of the country: 1 h to downtown NYC or Philadelphia, 3 h to Baltimore, and around 4 h to Washington DC or Boston. New Jersey public schools rank among the top in the nation and the region has some of the best health care facilities in the USA. Despite its small size, NJ has quite diverse geography, landscapes, and agriculture, and is within a few hours drive of pristine and breathtaking natural areas in New York and Pennsylvania.